




EXAMPLE:

Please note the colour codes which demonstrate how parents qualified under CCSS and where they will now qualify from September 2010.

Community Childcare Subvention Scheme 2008 – 2010




Example of childcare fees under the CCSS in a childcare service with an operational cost of €135 per week for a full day-care place, with pro rata reductions for shorter hour's services:

	Fulltime	Part-time	Shorter Hours
	5 hours plus	3 hours 30 minutes to 5 hours	Less than 3 hours 30 minutes*
 BAND A	Subvention €100 Fee €35	Subvention €50 Fee €17.50	Subvention €33.30 Fee €11.70
 BAND B	Subvention €70 Fee €65	Subvention €35 Fee €32.50	Subvention €23.30 Fee €21.70
 BAND C	Subvention €45 Fee €90	Subvention €22.50 Fee €45	Subvention €15 Fee €30

*But at least 2 hours and 15 minutes. A service operating for less than 2 hours and 15 minutes may be considered under the CCSS on a case-by-case basis, in which case the subvention rates per week per place would be €16.65 for Band A, €11.65 for Band B and €5 for Band C.

Community Childcare Subvention (CCS) scheme Starting September 2010

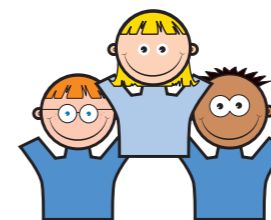
Example of childcare fees under the CCSS in a childcare service with an operational cost of €135 per week for a full day-care place, with pro rata reductions for shorter hour's services:

	Fulltime	Part-time	Shorter Hours
	5 hours plus	3 hours 30 minutes to 5 hours	Less than 3 hours 30 minutes*
  BAND A	Subvention €100 Fee €35	Subvention €50 Fee €17.50	Subvention €33.30 Fee €11.70
 BAND B	Subvention €50 Fee €85	Subvention €25* Fee €42.50	Subvention €16.50* Fee €28.50

*Band B part-time and shorter hours subvention amounts to be confirmed.



BAND C: Negotiations are underway with the relevant Departments, to provide ringfenced free childcare places in participating services for qualifying parents attending FAS or VEC courses.



Dublin City

CHILDCARE COMMITTEE LTD

COISTE CÚRAIM LEANAÍ CHATHAIR BHAILE ÁTHA CLIATH

COMMUNITY CHILDCARE SUBVENTION SCHEME (CCSS) AND THE NEW COMMUNITY CHILDCARE SUBVENTION (CCS) SCHEME,

TAKING EFFECT FROM 1 SEPTEMBER 2010



Transforming Ireland

Funded by the Irish Government
under the National Development Plan 2007-2013



Community Childcare Subvention Scheme 2008 – 2010

What determines if a parent is Band A, B or C for the purposes of qualifying for a CCSS subvention rate?

The Office of the Minister for Children and Youth Affairs (OMCYA) will advise childcare services as to which parents who have provided personal information in order to avail of the CCSS qualify for Band A, B or C status.

Where a parent is not identified by the OMCYA as qualifying under Band A, B or C and wishes to appeal, they may do so directly to the OMCYA.



Band A is the highest subvention rate and applies to parents in receipt of most social welfare payments (or participating in a scheme such as Community Employment, which demonstrates an underlying entitlement to same). At present, the subvention rate for a Band A parent using full day-care is €100 per week.



Band B is the second highest subvention rate and applies to parents in receipt of Family Income Supplement (FIS) and participants in certain FAS and VEC schemes. At present, the subvention rate for a Band B parent using full day-care is €70 per week.



Band C is the third subvention rate and is intended for low-income working parents who are above the FIS threshold. While services are permitted to vary the criteria used to determine whether a parent qualifies as Band C, in general, a parent holding a medical or GP visit card would be expected to qualify. At present, the subvention rate for a Band C parent using full day-care is €45 per week.

Does anything else affect the subvention rates?

Yes. The subvention rates given for Bands A, B and C are for full-care services, i.e. for more than 5 hours per day. However, where a parent is using a shorter hour's service, the service will receive a reduced subvention rate and will reduce the fee charged to the parent by that amount. For example:

- *3 hours 30 minutes to 5 hours = Half the full subvention rate*
E.g. A parent who qualifies as Band B using a service that costs €67.50 per week will qualify for a subvention of €35 per week and will, therefore, be charged €30 per week.
- *Less than 3 hours 30 minutes = A third of the full subvention rate*
E.g. A parent who qualifies as Band C using a service that costs €45 per week will qualify for a subvention of €15 per week and will, therefore, be charged €30 per week.

In addition, where the service is open for 46 weeks per year or more, the amount of CCSS funding it will receive will be calculated on the basis of 52 weeks. Services open for less than 46 weeks per year will be subvented on the basis of the actual number of weeks they are open.

Where children under the age of 1 year are attending a service, the service will receive a supplement of €30 per week, per full day-care place, for each such child. This is a supplement to the service towards the additional costs associated with caring for your infants.

In certain cases, qualifying services that would otherwise receive very low levels of grant subvention (e.g. small rural services or services located on the Islands) may be provided with a minimum grant level of €20,000 per annum.

Community Childcare Subvention (CCS) scheme Starting September 2010

The introduction of a follow on scheme to the Community Childcare Subvention Scheme (CCSS) with effect from 1 September 2010, was announced in the Budget in December 2010. The new Community Childcare Subvention (CCS) scheme, which will continue to be restricted to community not for profit childcare services, will be implemented by the Office of the Minister for Children and Youth Affairs (OMCYA) on an on-going basis.

From September 2010 the CCS scheme will contain the following provisions:



Band A: The subvention rate will be maintained at €100 (full daycare with pro-rata reductions). Parents will continue to qualify for a Band A subvention, where they are in receipt of a social welfare payment.



From September 2010, parents will also qualify for the Band A rate where they are in receipt of Family Income Supplement (FIS). The subvention paid to a service in the case of a child referred by the Health Service Executive (HSE) will be increased to the Band A rate (this applies only where the HSE pays the balance of the childcare fee required by the service).

Band A parents in receipt of Job Seeker's Benefit/Assistance will qualify for subvented childcare on a part-time basis only (i.e. not more than 5 hours of childcare per day).



Band B: A subvention rate of €50 (previously €45) will apply to low income working parents, for example, parents holding medical or GP visit cards. Parents verified by the OMCYA as Band A in the previous year's return, but who would no longer be eligible for subvention, may also attract subvention at this rate.



Band C: Negotiations are underway with the relevant Departments, to provide ringfenced free childcare places in participating services for qualifying parents attending FAS or VEC courses. It is hoped to finalise this proposal in the coming months subject to further discussions with the relevant Departments.

Additional features to the CCS:

- Sessional places provided for exactly 3 hours 30 minutes per day will attract the sessional rate of subvention rather than the part-time rate. This aligns the scheme with the Child Care (Pre-School Services) (No. 2) Regulations 2006. Places of at least 3 hours 31 minutes, but no more than 5 hours duration, will continue to be counted as part-time places.
- No additional payment will be provided to services where children being cared for are aged less than 1 year.
- A minimum grant will continue to be provided in the case of services on the islands or in isolated rural locations.
- The transitional funding arrangements allowed for the interim CCSS will cease with the commencement of the CCS on 1 September 2010.
- The CCS will be aligned with the free Pre-School Year in Early Childhood Care and Education (ECCE) scheme. Both will operate on an annual basis from September to August each year.